

# Nästet i Ultuna

35 kvm
















1 rum och kök

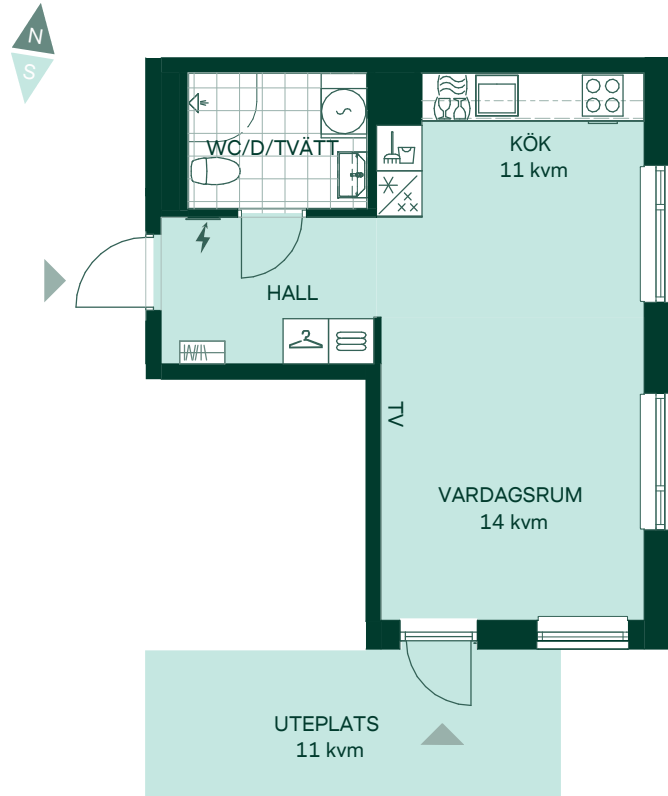
Hus: 03

Lgh: 22-1001

Upplåtelseform: Bostadsrätt

Plan: 10

-  Förberett för diskmaskin
-  Inbyggnadshäll med ugn
-  Kylskåp och frys
-  Förberett för mikrovågsugn
-  Överskåp
-  Spegelskåp
-  Duschvägg
-  Kombimaskin
-  Klädförvaring
-  Linneskåp
-  Städskåp
-  Elcentral
-  Radiator
-  Hatthylla
-  TV Förstärkt vägg för upphängning av TV

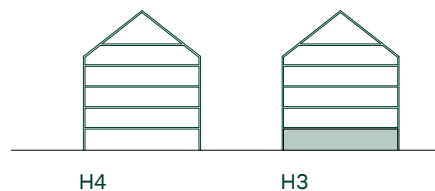
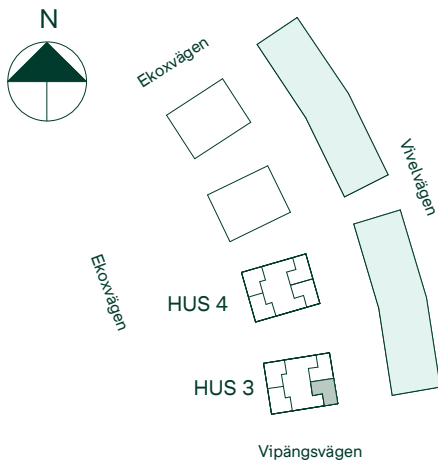


Takhöjd 2,5m om inget annat anges.

Bröstningshöjd 0,7m om inget annat anges.

Mått anges i meter.

Kvadratmeter är cirka.



SKALA 1:100



Reservation för eventuella ändringar och ytavvikelser.  
Datum: 2021-02-05 Revidering datum: 2021-03-02