

















# Glöd på Tomtebo gård

90 kvm

3 rum och kök

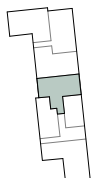
Hus: 1  
Lgh: 1A-1003  
Upplåtelseform: Bostadsrätt  
Plan: 0 - Entréplan

-  Diskmaskin
-  Inbyggnadshäll
-  Frys
-  Kylskåp
-  Högskåp med ugn / förberett för mikro
-  Överskåp
-  Duschvägg
-  Torktumlare
-  Tvättmaskin
-  Klädförvaring
-  Linneskåp
-  Städskåp
-  Elcentral
-  Förberett för handdukstork
-  Radiator
-  Hatthylla
- BH** Bröstningshöjd
- SKJD** Skjutdörrsgarderob
- IL** Inspektionslucka

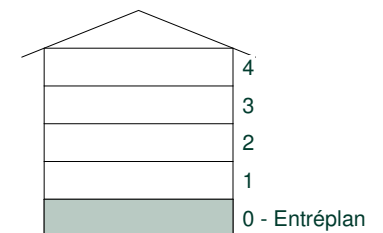
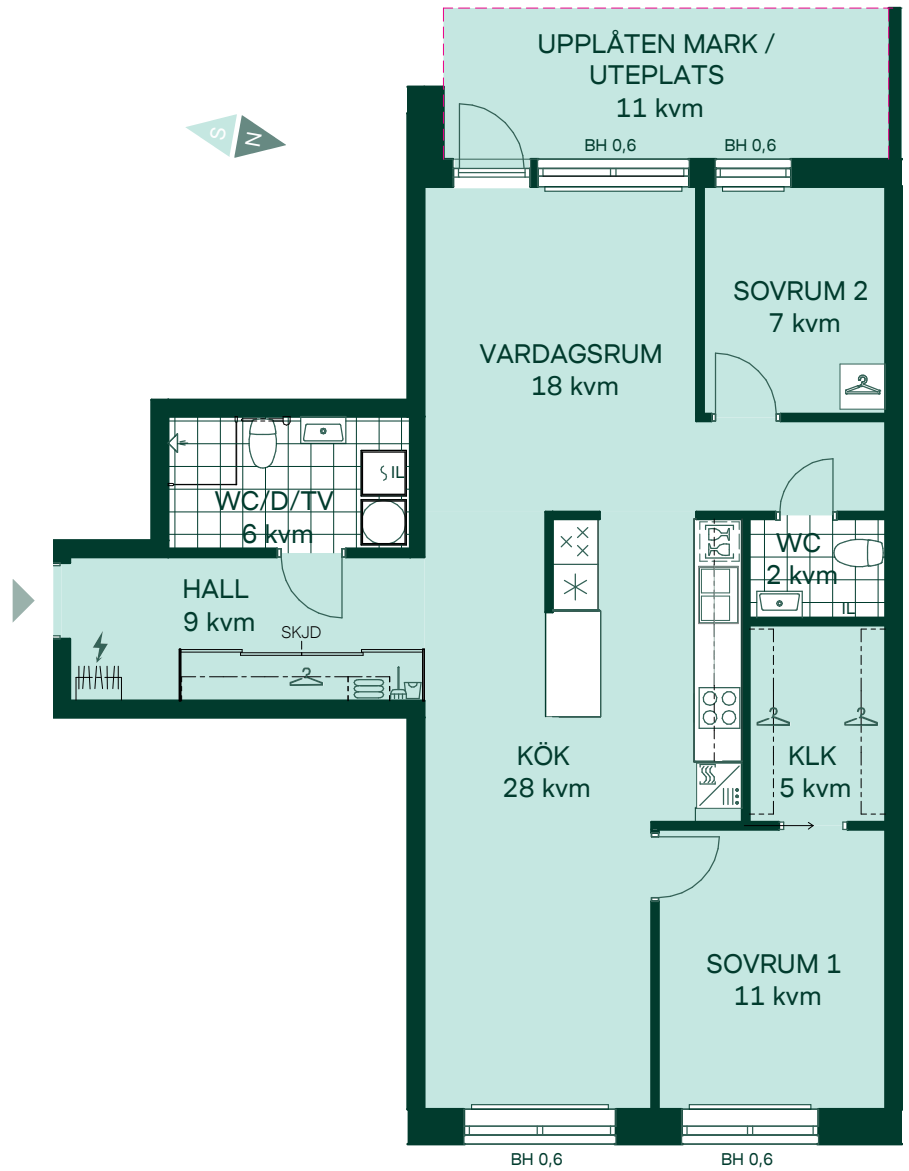
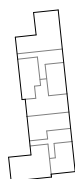
Takhöjd 2,5 m om inget annat anges.  
Kvadratmeter är cirka.  
Mått anges i meter.  
Lokala försänkningar i innertak kan förekomma.  
Separat lägenhetsförråd om ca 2-5 kvm.  
All inredning monteras enligt planritning.  
- - - Gräns för upplåten mark.



Hus 1



Hus 2



SKALA 1:100



Reservation för eventuella ändringar och ytavvikelser.  
Datum: 06/27/22 Revideringsdatum: 03/20/24