

Explora Premium in Södra Änggården

Apartments in Explora Premium: 21-1801 | 21-1802
21-1803 | 22-1701 | 22-1801 | 22-1802 | 23-1701


BONAVA

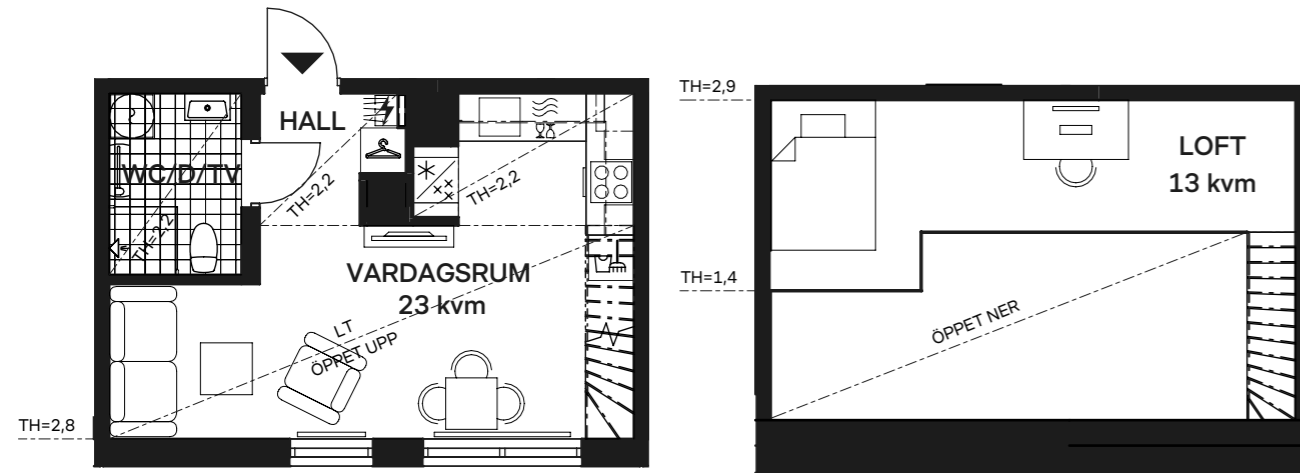

OBOS



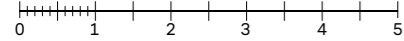
Discover Explora Premium

Explora Premium apartments give you that little extra when you buy your new home. Here you'll live in a very attractive location on the top floor of the building, where the apartments have high ceilings and some have private rooftop terraces. In addition, all homes come with upgraded materials, included free of charge – making your home a place to truly enjoy. The first stage of the Explora Premium offering comprises seven apartments with 1–5 rooms and kitchen.

31+13KVM | 1
KVM LOFT | ROK



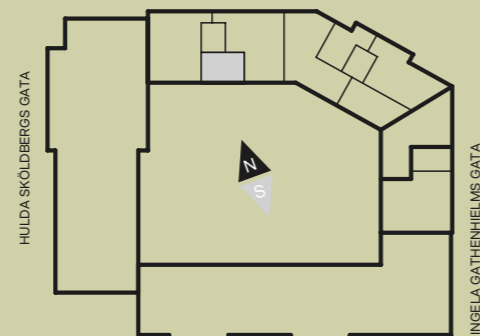
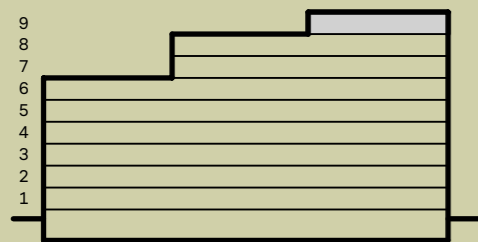
SKALA 1:100



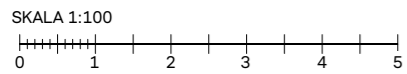
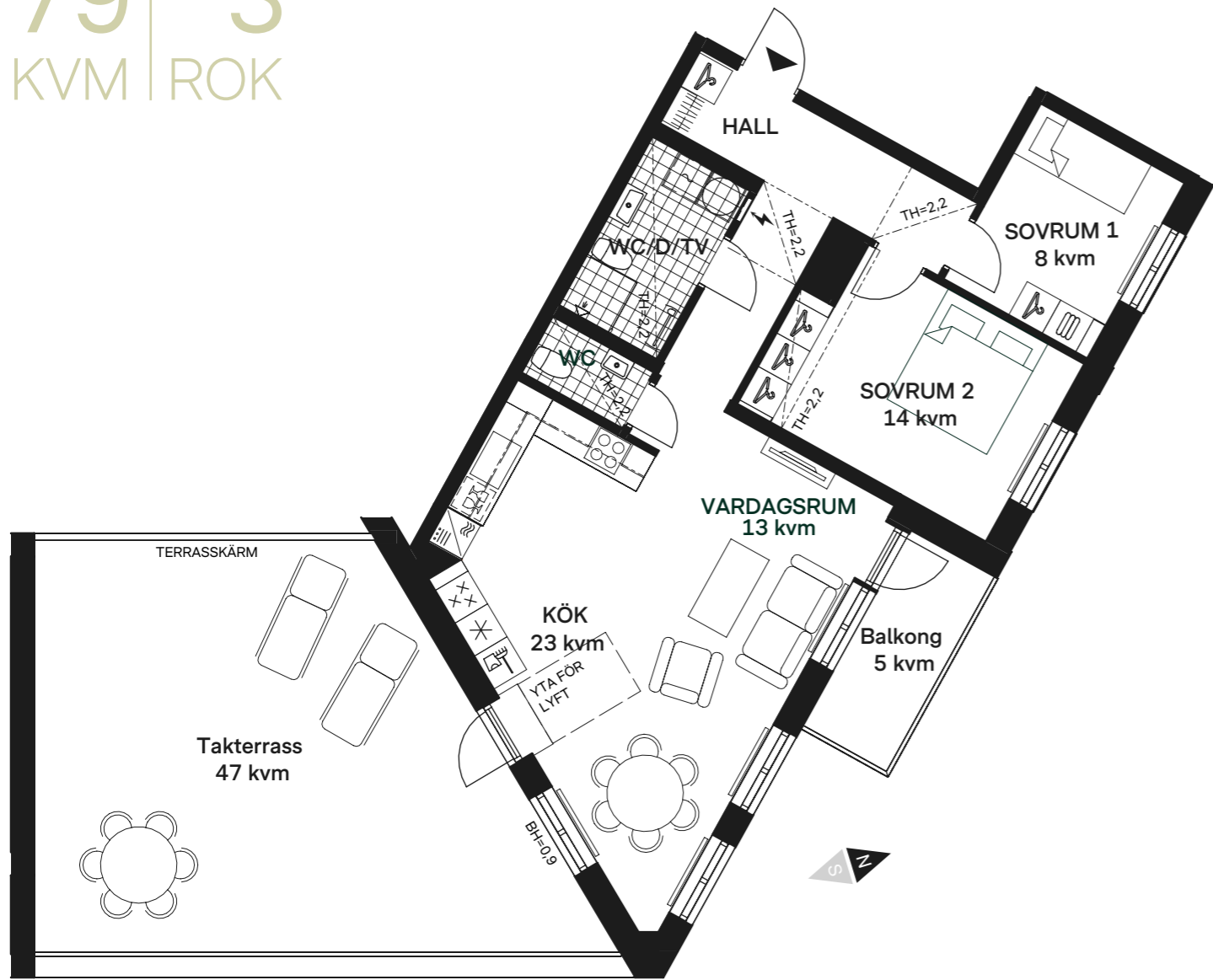
Apartment 21-1802

Welcome to this cosy one-room apartment on the top floor of the building, which is unique in its kind. It boasts a well-planned 31 sqm layout, and there is also a mezzanine sleeping area of 13 sqm, which creates extra living space

in the apartment. With a charming sloping ceiling and a view over the courtyard, this is a home you can enjoy for many years to come.



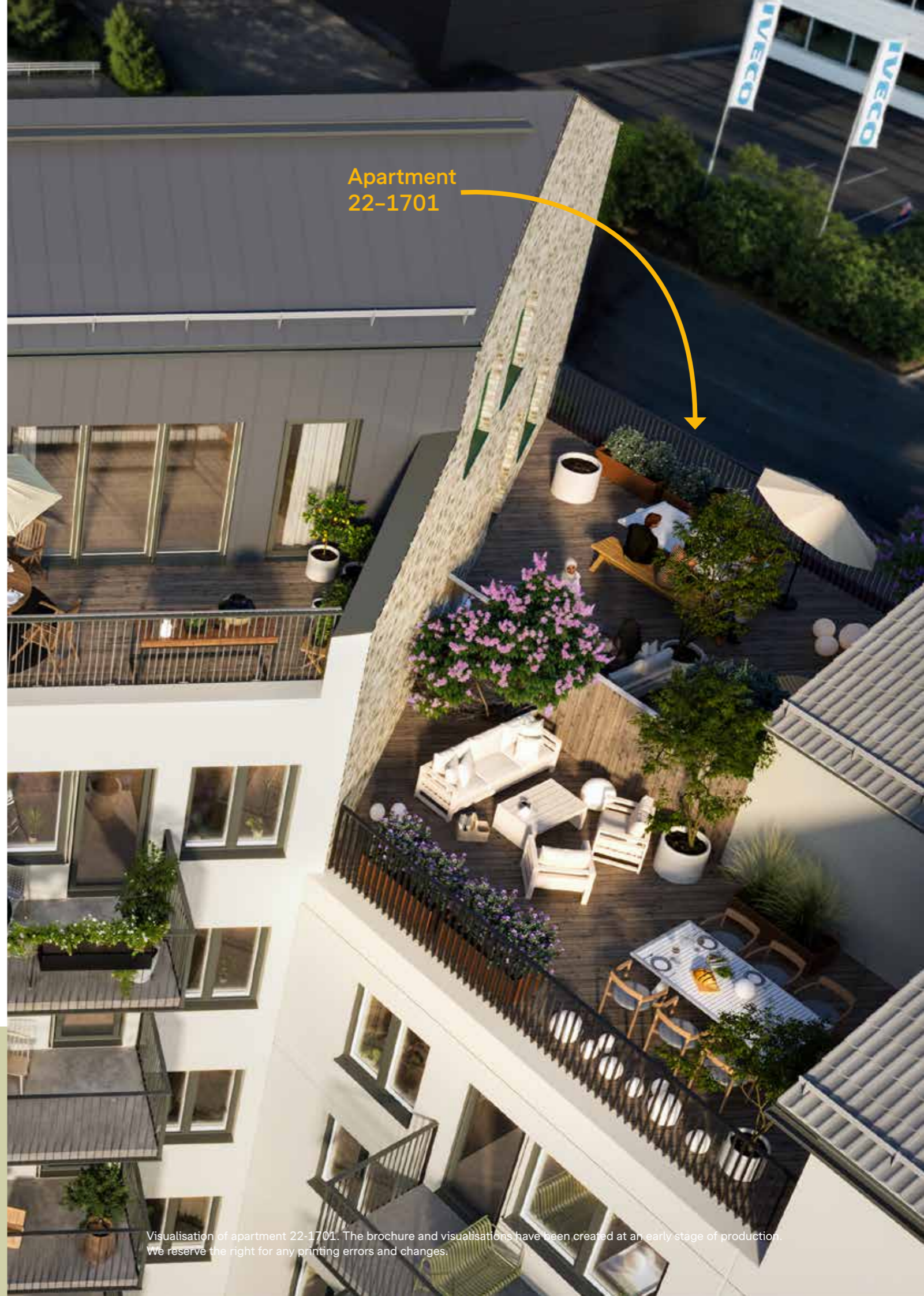
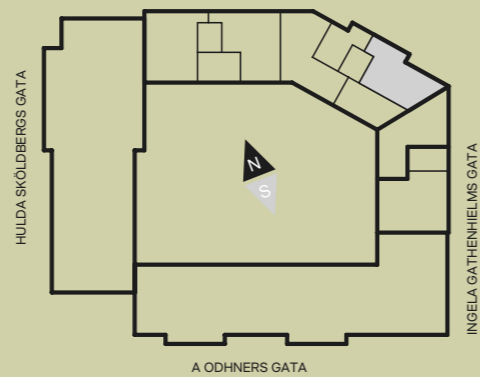
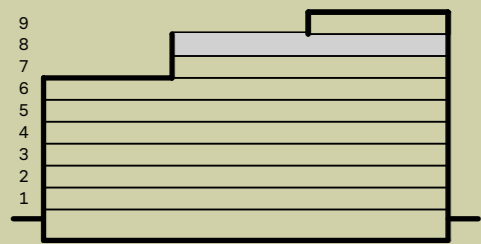
79 | 3
KVM | ROK



Apartment 22-1701

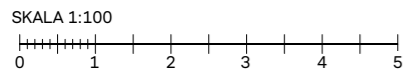
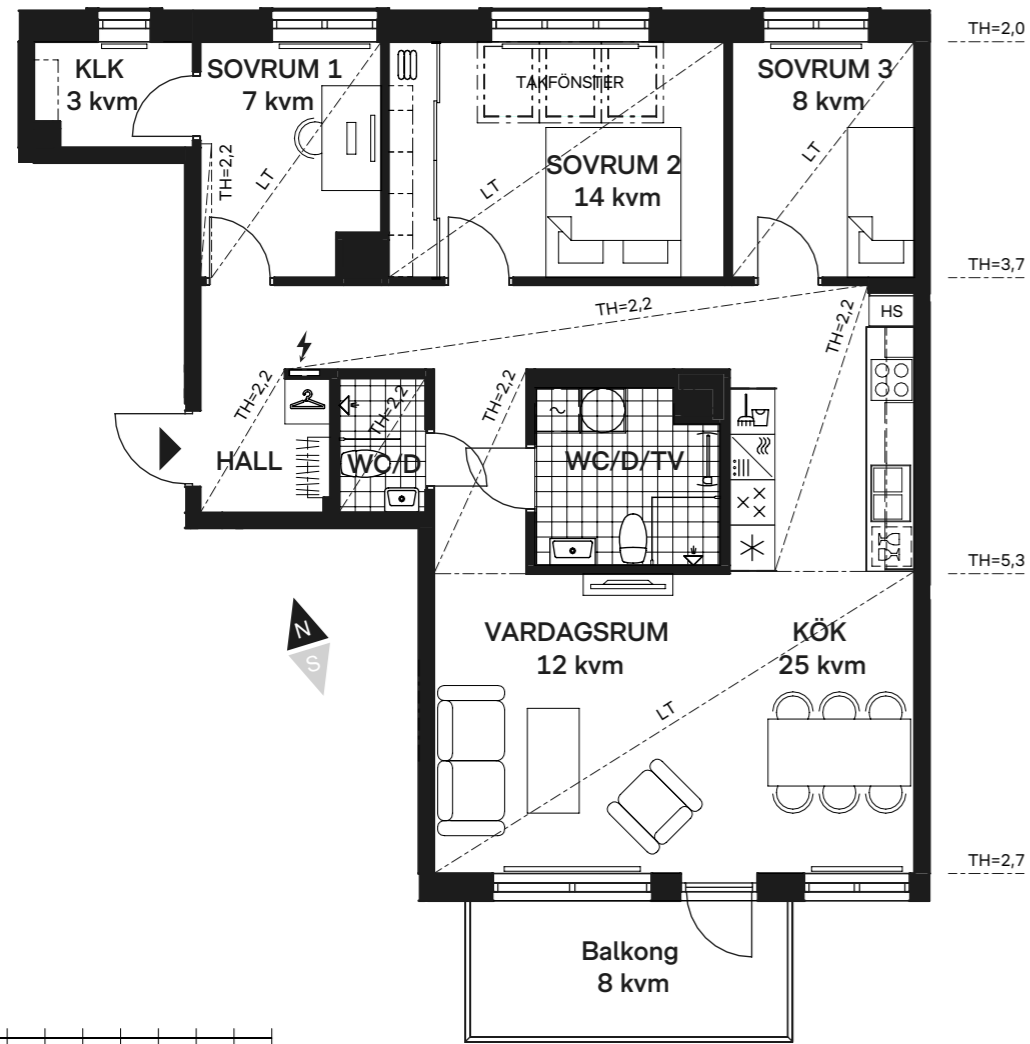
Welcome to this well-planned three-room apartment totaling 79 sqm. It not only has a balcony, but also a luxurious rooftop terrace of 47 sqm. It offers an open-plan living room and kitchen, creating an attractive lounge area, and

in the kitchen you can install a kitchen island if you wish. In addition to the large bathroom, there is an extra toilet – convenient for both family and guests.



Visualisation of apartment 22-1701. The brochure and visualisations have been created at an early stage of production. We reserve the right for any printing errors and changes.

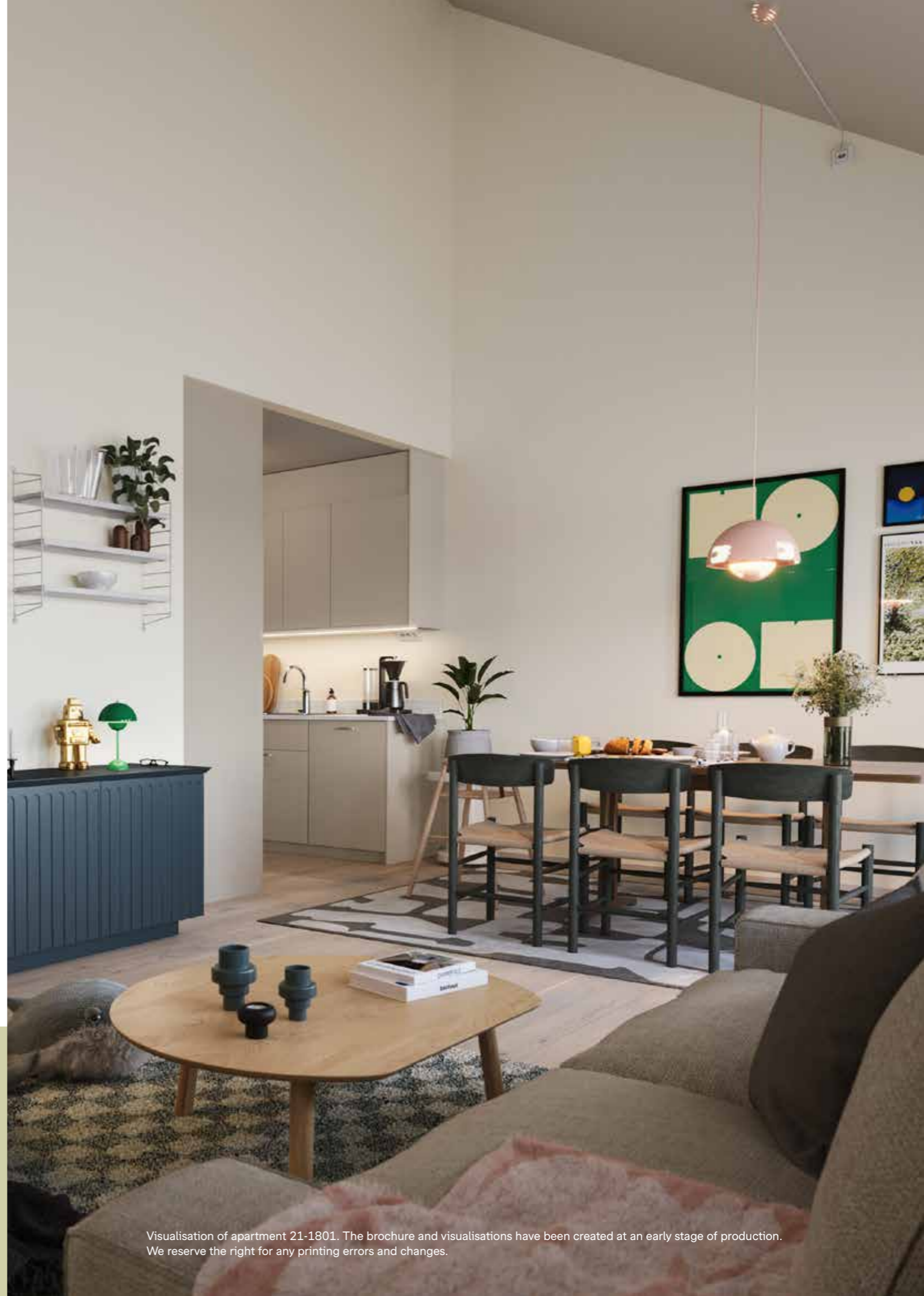
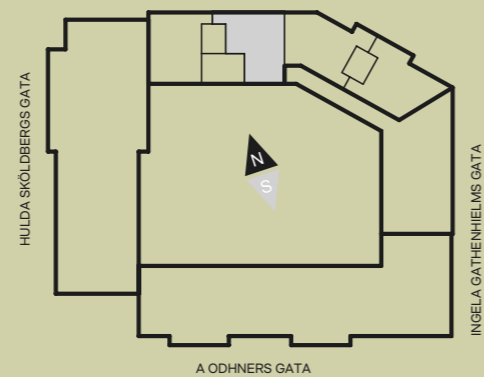
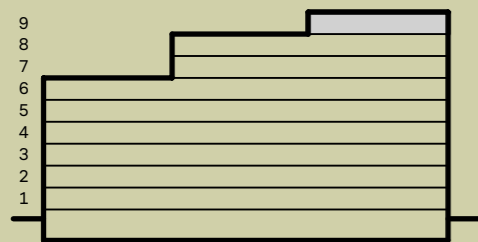
92 | 4
KVM | ROK



Apartment 21-1801

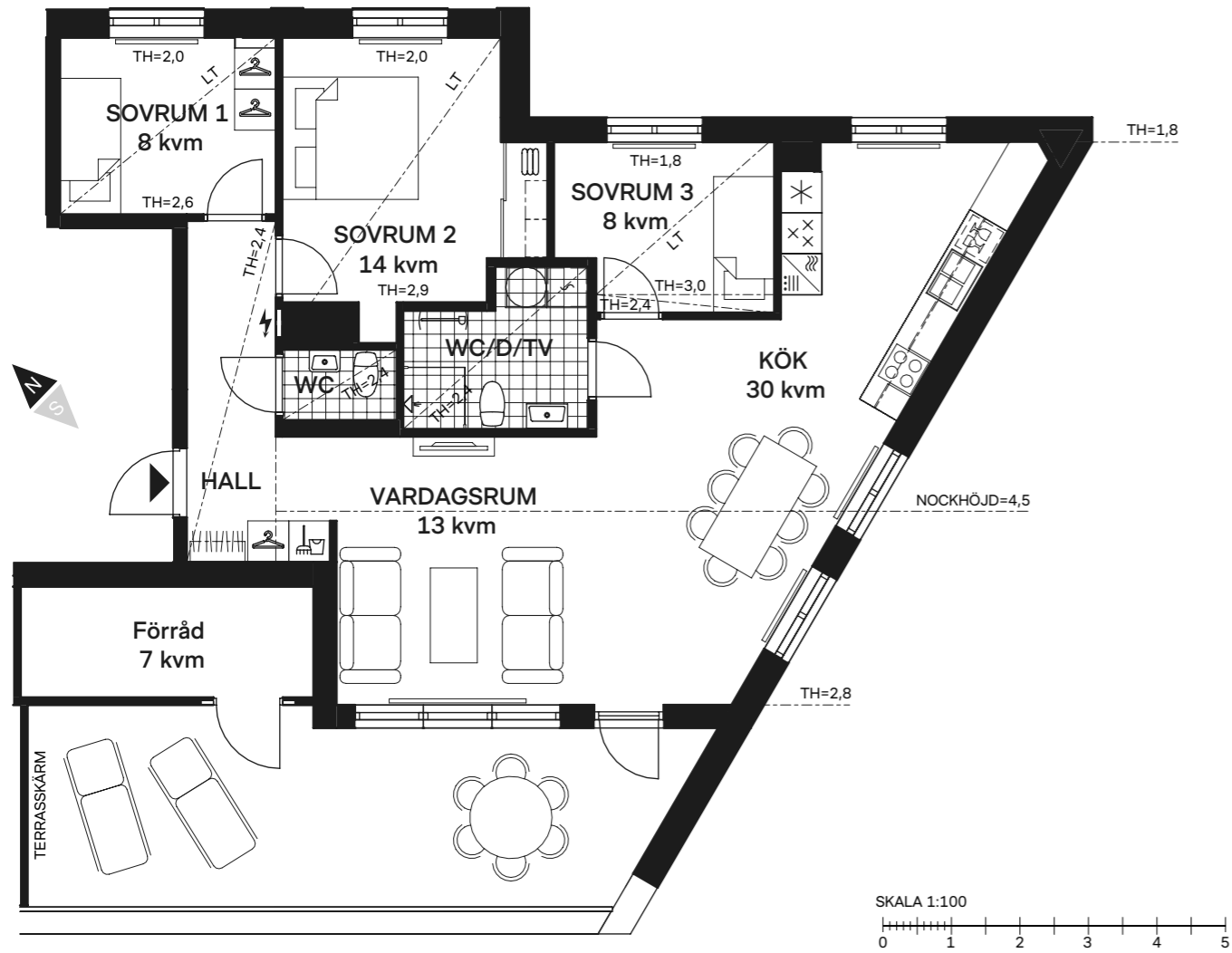
Welcome to this spacious four-room apartment of 92 sqm with a south-facing balcony. It offers two bathrooms, a large lounge area and three bedrooms with views over Änggårdsbergen nature reserve. One of the bedrooms features a walk-in wardrobe, while another bedroom has

a lovely skylight where you can admire the stars at night. The apartment is located on the top floor of the building and has charming sloping ceilings with 5.3 m ridge height at the highest points.



Visualisation of apartment 21-1801. The brochure and visualisations have been created at an early stage of production. We reserve the right for any printing errors and changes.

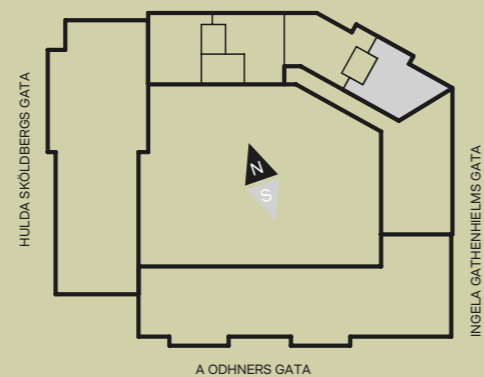
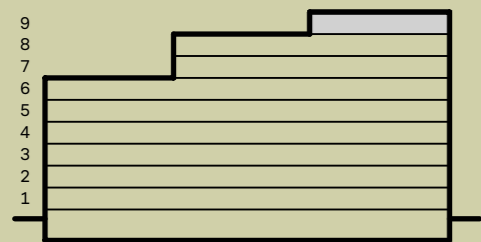
92 | 4
KVM | ROK



Apartment 22-1801

Welcome to this spacious four-room apartment of 92 sqm, with windows in three directions that make it wonderfully bright throughout. The apartment has a large rooftop terrace of 26 sqm, where you will also find a sizeable storage.

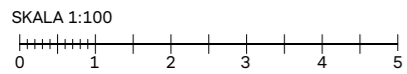
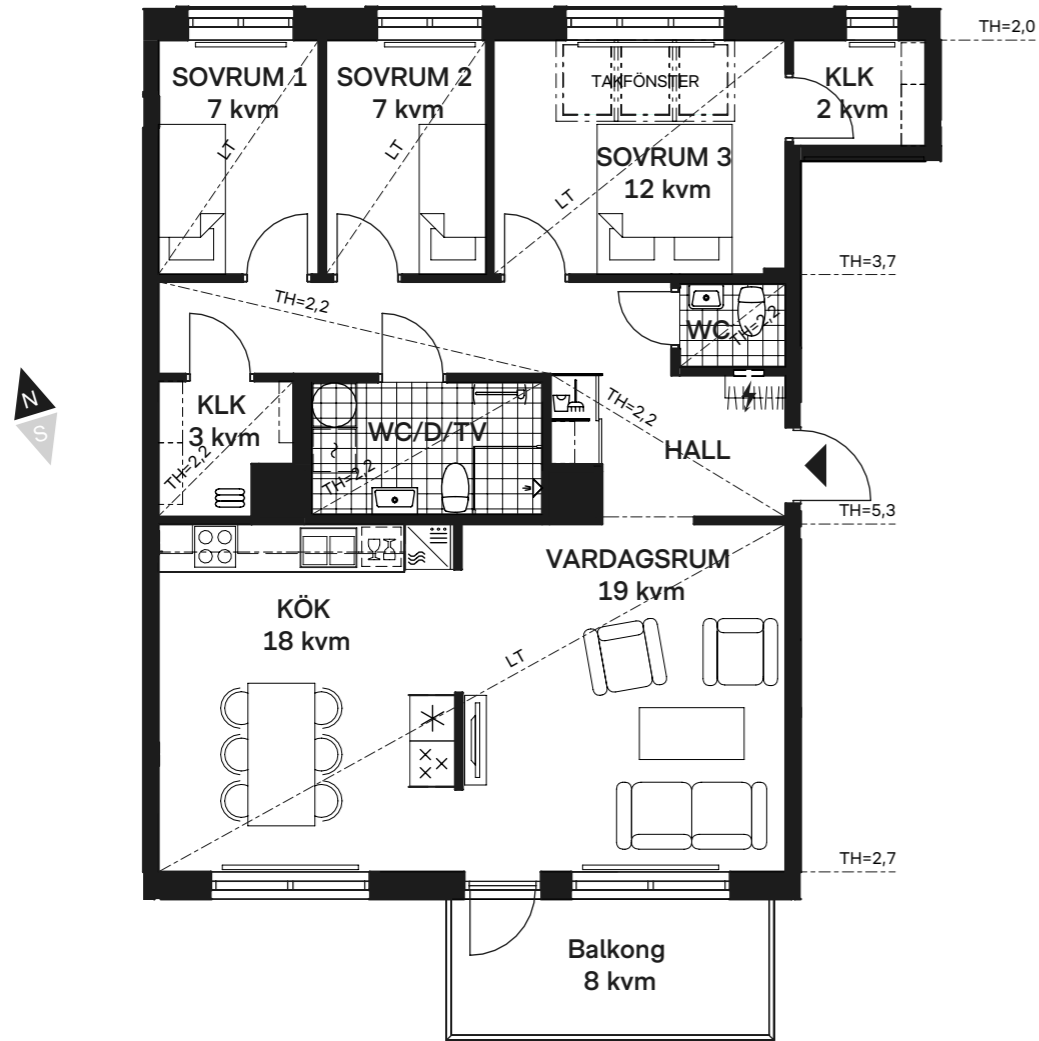
The living room and kitchen form an open lounge area, with space for both a large dining table and a smaller kitchen table. The three bedrooms overlook Änggårdsbergen nature reserve, and there is a spacious bathroom as well as an extra toilet. The sloping ceiling of the apartment reaches a ridge height of 4.5 m.



Visualisation of apartment 22-1801. The brochure and visualisations have been created at an early stage of production. We reserve the right for any printing errors and changes.



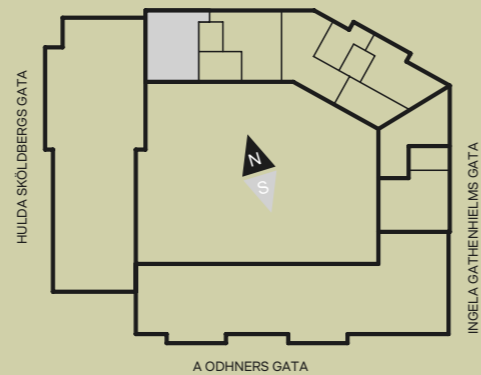
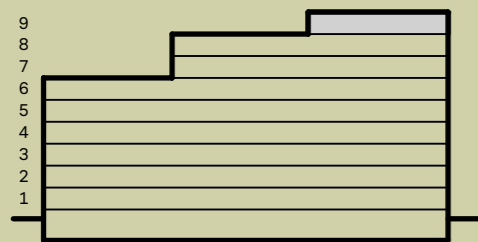
93 | 4
KVM | ROK



Apartment 21-1803

Welcome to this well-planned four-room apartment totaling 93 sqm with a south-facing balcony. The apartment has a large lounge area, a bathroom, an extra toilet and three bedrooms with views over Änggårdssbergen nature reserve. The master bedroom receives a lot of natural light thanks

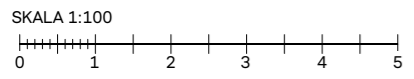
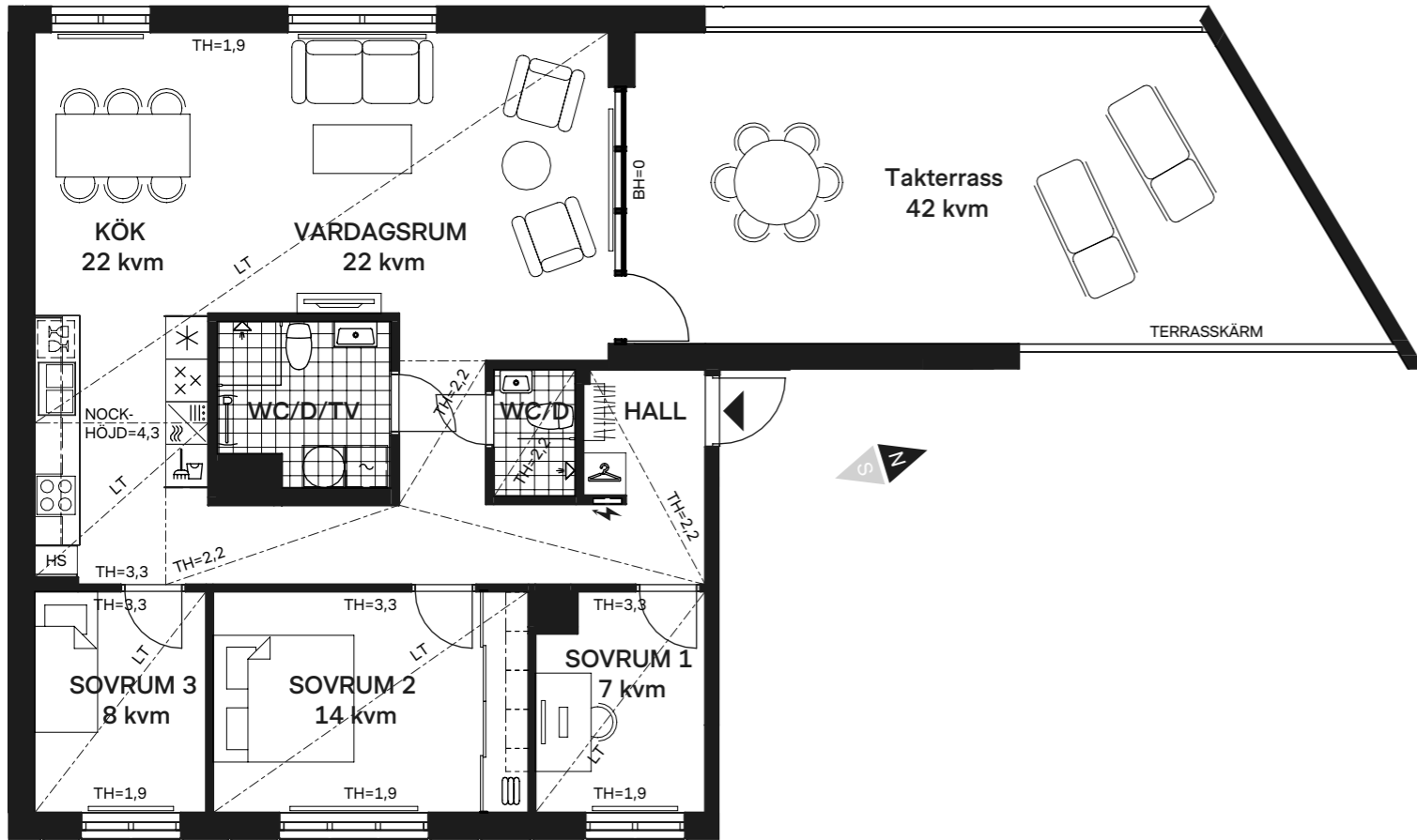
to the large skylight, and it also features a walk-in wardrobe that can double up as a children's room or office. The apartment is located on the top floor of the building, and has charming sloping ceilings with a ridge height of 5.3 m at the highest points.



Visualisation of apartment 21-1803. The brochure and visualisations have been created at an early stage of production. We reserve the right for any printing errors and changes.



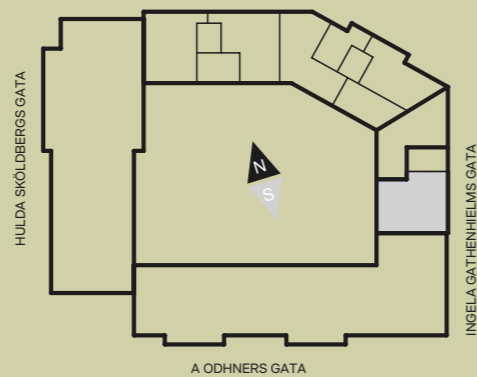
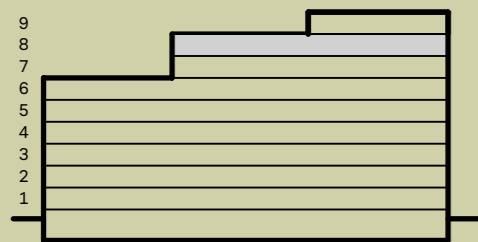
98 | 4
KVM | ROK



Apartment 23-1701

Welcome to this well-planned four-room apartment of 98 sqm, which also features a rooftop terrace of 42 sqm. The large lounge area between the kitchen and living room receives a lot of natural light from the glass panels

to the rooftop terrace, and the ridge height of this apartment reaches 4.3 m. The three spacious bedrooms have charming sloping ceilings, and the two bathrooms offer both comfort and convenience for family and guests alike.



Visualisation of apartment 23-1701. The brochure and visualisations have been created at an early stage of production. We reserve the right for any printing errors and changes.



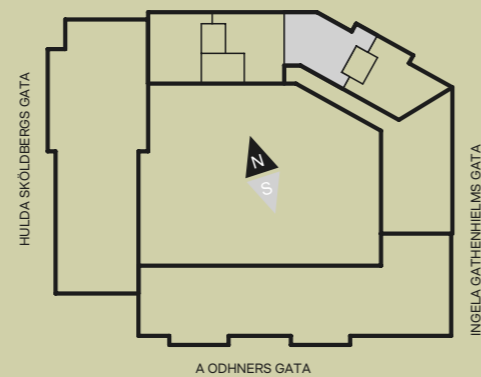
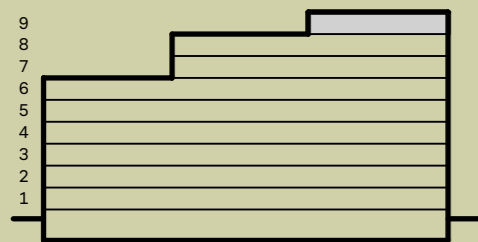
96 | 5
KVM | ROK



Apartment 22-1802

Welcome to this well-planned five-room apartment of 96 sqm, which features a luxurious rooftop terrace of 30 sqm, including a large storage. The apartment has four bedrooms with attractive sloping ceilings, a spacious





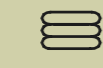



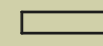



bathroom and an additional toilet. In the large open lounge area between the living room and the corner kitchen, the sloping ceiling reaches a ridge height of 4.5 m.



Visualisation of apartment 22-1802. The brochure and visualisations have been created at an early stage of production. We reserve the right for any printing errors and changes.



List of symbols

	Dishwasher		Washing machine
	Built-in induction hob with oven		Tumble dryer
	Built-in induction hob		Coat rack
	Refrigerator and freezer		Clothing storage
	Refrigerator		Linen cabinet
	Freezer		Cleaning cabinet
	Tall cabinet with oven/microwave		Electrical panel
	Microwave		Radiator
	Overhead cabinet		Reinforced wall for TV mounting
	Shower wall	HS	Tall cabinet
	Heated towel rail	BH	Sill height
	Combination washer-dryer	LT	Sloping ceiling

Ceiling height apartment 2X-XXXX: CH = 2.5m unless otherwise stated.
 Ceiling height apartment 3X-XXXX: CH = 2.6m unless otherwise stated.
 Local recesses in the ceiling may occur.
 Dado height is 0.6m unless otherwise stated.
 Square meters are approximate.
 Measurements are given in meters.
 All interior fittings are installed according to the floor plan.
 Boundary of allocated land. - - - - -



Your Home

Quality in every detail

The interiors of Explora Premium are carefully designed using high-quality, durable materials that combine functionality and aesthetics. The walls and ceilings create a neutral base for your interior design, where you have the opportunity to choose from our colour palette according to your personal style and feel. The solid, smooth interior doors have a sound-absorbing effect. To create atmospheric lighting, we have installed a lighting rail with spotlights in selected rooms.





Inspiration picture of the Contrast style.

Kitchen

Welcome to a place made to enrich life's most important moments. The kitchen boasts a combination of practicality and aesthetics in its design. In Explora Premium, you can choose between different kitchen styles free of charge – Contrast, Elegant, Modern and Classic.

There are also upgraded appliances here – to enhance the cooking experience at home, the built-in convection oven with steam function makes it easy to bake, fry and steam your food, with professional results. The sous vide cooking function allows you to cook food perfectly at low temperatures. The upgraded induction hob with bridging function makes it easy to cook with larger cookware, as

two plates can be combined to create a large one. Timers can be set for each cooking zone, so it switches off automatically when the time is up – an easy way to cook when you're preparing many dishes at the same time. In other words, it's never been easier to cook with a restaurant feel at home. And when it's time for washing the dishes, the dishwasher has a smart feature that makes it easy to lift the dishwasher basket to the perfect height. A built-in microwave is included, and for wine connoisseurs, a wine cooler can be added as an option in selected apartments.



Bathroom

For the bathroom, you can choose between Warm, Cold and Basic styles free of charge – all so that your bathroom reflects your personal style. Dimmable spotlights allow you to adjust the light as needed. With electric floor heating, you get the ultimate comfort, whatever the season. The towel warmer with timer keeps your towels warm and comfortable for the early mornings. The glass shower screen is foldable, making it easy to free up floor space when needed. The mirror cabinet has recessed lighting and the sink comes with two drawers for easy storage. Beside the washing machine and dryer, or washer-dryer combo, there is a workbench that's handy when sorting and folding laundry. Above the bench, there are wall cabinets for extra storage.

Your Home – Your Choice

The apartments in Explora Premium come with an upgraded interior in warm, natural tones as standard. However, a home should be an expression of your personal style and taste. That's why you can choose from our style concepts when you buy an Explora Premium home. To help you, our experienced interior designers will guide you through the choices and put together a proposal that suits you. You will be invited to a meeting to discuss and choose the style for you and you can also book a private meeting to personalise your new home.



Contrast

The Contrast style concept uses different materials to create a luxurious and vibrant feel. The doors with integrated handles together with the vertical glazed tiles and quartz composite worktop give the kitchen a stylish and sophisticated look.

A wall-mounted cooker hood with stylish, clean lines is included in the Contrast style concept. The built-in fridge, freezer and dishwasher, together with the stainless steel and black appliances, give the kitchen a modern feel.

Specifications

- Doors with integrated handles
- Composite worktop with glazed tile splash guard, in vertical position
- Built-in fridge-freezer
- Built-in dishwasher
- Induction hob
- Wall-mounted cooker hood
- Stainless/black oven and microwave

In this style, you can choose between the following doors, splash guards and worktops.



Dark Grey Beige White



Glazed White Glazed Light Beige



Marble-patterned composite White



Sandstone-patterned composite Light beige



Concrete-patterned composite Light grey



Marble-patterned composite Light grey/beige



Sandstone-patterned composite Dark beige





Elegant

The Elegant style concept creates a kitchen that exudes a warm, soft look, and, as the name suggests, an elegant expression. The smooth doors with integrated handles together with a worktop and splash guard in composite reinforces the clean and simple lines of the kitchen.

The appliances come in stainless steel and black, and the built-in dishwasher blends in harmoniously with the rest of the kitchen.

Specifikation

- Smooth doors with integrated handles
- Composite worktop and splash guard
- Undermount sink
- Freestanding fridge-freezer in stainless steel and a built-in dishwasher
- Induction hob
- Built-in cooker hood
- Stainless/black oven and microwave

In this style, you can choose between the following doors and worktops. The colour of the splash guard depends on your choice of worktop. You can choose between a 20 cm or 50 cm high splash guard.



Dark Grey

White

Beige



Marble-patterned composite
White



Sandstone-patterned composite
Light beige



Concrete-patterned composite
Light grey



Marble-patterned composite
Light grey/beige



Sandstone-patterned composite
Dark beige





Modern

The Modern style concept features authentic materials with a modern look. The smooth doors combined with the grooved handles and a composite worktop and splash guard give the kitchen a balanced, modern look.

The built-in fridge and freezer blend seamlessly into the kitchen, together with the oven, microwave and cooker hood in black and stainless steel.

In this style, you can choose between the following doors, handles and worktops. The colour of the splash guard depends on your choice of worktop. You can choose between 20 cm or 50 cm high splash guard.

Specifikation

- Smooth cabinet doors with handles on integrated appliances, knob on base cabinets and push to open on wall cabinets
- Composite worktop and splash guard, painted above
- Undermount sink
- Built-in fridge, freezer and dishwasher
- Induction hob
- Built-in cooker hood
- Stainless/black oven and microwave



Beige Grey Green Grey White



Graphite grey Brushed stainless steel Bronzed brass



Marble-patterned composite White Sandstone-patterned composite Light beige Concrete-patterned composite Light grey
Marble-patterned composite Light grey/beige Sandstone-patterned composite Dark beige



Classic

The Classic style concept perfectly balances the past, the present and the future. The frame doors together with the white bevelled tiles give the kitchen a homely feel that is both traditional and timeless.

The concept includes a wall-mounted cooker hood in a rounded design that gives a soft impression, and a built-in dishwasher that blends in nicely with the rest of the kitchen.

Specifikation

- Frame doors, with handles on drawers and knobs on wall cabinets
- Composite worktop with white tile splash guard and bevelled edges, semi-interlocking
- Undermount sink
- Freestanding fridge-freezer in stainless steel and a built-in dishwasher
- Induction hob
- Wall-mounted cooker hood
- Stainless/black oven and microwave

In this style, you can choose between the following doors, handles and worktops. The colour of the splash guard depends on your choice of worktop.



Grey green



Light grey



Oak



Marble-patterned composite
White



Sandstone-patterned composite
Light beige



Concrete-patterned composite
Light grey



Stainless look



Brushed stainless steel



Porcelain knob



Brushed stainless steel knob



Marble-patterned composite
Light grey/beige



Sandstone-patterned composite
Dark beige



Kitchen appliances

To create extra cooking pleasure in the home, an upgraded built-in convection oven with steam function is included, which makes it easy to bake, roast and steam. The sous vide cooking function allows you to cook food perfectly at low temperatures. The induction hob with bridging feature makes it easy to cook with larger cookware, as two plates can be combined to create a large one. The built-in dishwasher has a ComfortLift feature, which means that the lower basket raises to a comfortable height. It also has a TimeBeam feature that shows the status of the dishwasher programme, so you can easily see how much time is left.

Premium Plus

- Induction hob with bridging and power boost functions.
- Stainless steel/black SteamPro oven with Steamify feature, automatic cooking programmes and steam cleaning.
- Built-in microwave in stainless steel/black, with a special feature that allows you to save settings for different dishes.
- Fridge and freezer
- Built-in dishwasher with ComfortLift and TimeBeam

Wine cooler SEK 24,900

Keeps the wine at the ideal temperature. It allows you to easily adjust the temperature between 5°C and 20°C according to the temperature you want for your wine. The wine cooler can hold up to 15 bottles.

Kitchen sink flow

This package includes a single bowl sink in an elegant and slim design together with a kitchen faucet with pull-out spout.

The sink size is adapted to the width of the sink base cabinet.

Kitchen sink flow SEK 8,900/9,900

- Sink is replaced with upgraded single bowl sink
- Faucet with pull-out spout and shower function

*Premium Plus and wine cooler can only be added as an option in apartments where the oven and microwave are placed in a tall cabinet. Wine cooler is installed in the cabinet under the oven.

Interior packages

All our homes have fresh, white-painted walls, which give you a neutral base where you can then create your personal style. The floors have two-strip oak parquet with white baseboards. The white solid interior doors give a different feeling when you open and close them.

If you want to choose a different wall color or different parquet flooring, there are several options available.



White
0500-N



Matt oak, 3-strip



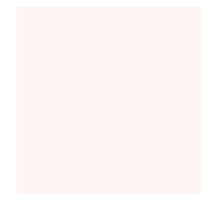
White interior door in
solid construction



Package for color, flooring and doors



White
0500-N



Warm white
0502-Y



Beige
1502-Y



Grey
1500-N



Green
S4010-G50Y



Pink
S1510-Y70R



Blue
3010-B



Yellow
0510-Y10R



Beige
2005-Y20R



White pigmented ash,
3-strip



White-glazed oak, 3-strip



Warm grey oak, 3-strip



White-glazed oak, 1-strip



Matt oak, 1-strip



Light brown oak, 2-strip

Choose your wall color

If you want to change the wall color in your new home, there are a total of nine colors to choose from. The price includes one color for all social areas, and up to four different colors for the bedrooms depending on how many bedrooms your home has.

Wall colors for social areas

Change the wall color in the hallway, kitchen and living room to one of these favorites. The selected color will be painted in all social areas. When choosing a low splash guard in the kitchen, it is painted above in Modern and Elegant, and always in Base.

Wall colors for bedrooms

In the bedrooms you can choose from these five colors. You can choose different colors for each bedroom to give the rooms their own feeling and style.

Flooring

Flooring options are white-pigmented ash, white-stained oak, warm grey oak, light brown oak and matte oak. The baseboards are painted white.



Storage package

Base

Our homes include wardrobes and sliding door wardrobes, a good foundation for your storage. The sliding door wardrobes are in white melamine with a silver frame. The interior behind the sliding door wardrobe consists of a shelf, clothes rail, support strip and hanging rails.

Mirror storage*

Replace the fronts of your sliding door wardrobe with mirror glass with a silver frame. The package also includes four movable wire baskets. All to expand your storage possibilities in the home.

SEK: 6,900 (two doors)
11,900 (four doors)

*The number of doors on your sliding door wardrobe is shown on your floor plan. For apartments that have sliding doors placed under a sloped ceiling, it is not possible to choose the "Mirror storage" package as an option.





The bathroom visualisation is at an early stage of production; deviations may occur.

Cold

Specifications

- Grey tiles on wall and floor 30x60
- Grey tiles in shower 15x15
- Shower enclosure
- White chest of drawers with two drawers
- Mirror cabinet or round mirror with lighting
- Wall-mounted cabinet
- Electric towel warmer
- Ceiling spotlights with dimmer function



The bathroom visualisation is at an early stage of production; deviations may occur.

Warm

Specifications

- Beige tiles on wall and floor 30x60
- Beige tiles in shower 15x15
- Shower enclosure
- White chest of drawers with two drawers
- Mirror cabinet or round mirror with lighting
- Wall-mounted cabinet
- Electric towel warmer
- Ceiling spotlights with dimmer function



The bathroom visualisation is at an early stage of production; deviations may occur.

Basic

Specifications

- Tiles on wall 30x60
- Tiles on floor 15X15
- Shower enclosure
- White chest of drawers with two drawers
- Mirror cabinet or round mirror with lighting
- Electric towel warmer
- Wall-mounted cabinet
- Ceiling spotlights with dimmer function

Bathroom options

Shower plus, SEK 10,900

- Shower mixer and ceiling shower in chrome
- Shower screen with frosted glass

Washer-dryer plus*, SEK 16,900

- Washing machine 10.5 kg
- Self-dosing, fully automatic washing machine
- Tumble dryer 9 kg

*Only applies to side-mounted washer-dryer.



Bathroom storage package

Storage

Update the bathroom with a different color on the chest of drawers. Choose between Sand or Pure Oak.

Specification

- Chest of drawers with two drawers in the color Sand or Pure Oak
- Mirror cabinet or round mirror with lighting



WC storage package

WC Storage White

Mirror with lighting and white chest of drawers with one drawer and knob expands storage in the WC. Choose if you want brown, beige or grey tile.

Specification

- White chest of drawers with one drawer and knob
- Mirror with LED lighting
- Tile 15x15. Base brown-beige, Warm sand-beige or Cool grey.

SEK: White 7,900

WC Storage Sand

Mirror with lighting and sand colored chest of drawers with one drawer and knob expands storage in the WC. Choose if you want brown, beige or grey tile.

Specification

- Sand colored chest of drawers with one drawer and knob
- Mirror with LED lighting
- Tile 15x15. Base brown-beige, Warm sand-beige or Cool grey.

SEK: Sand 9,900

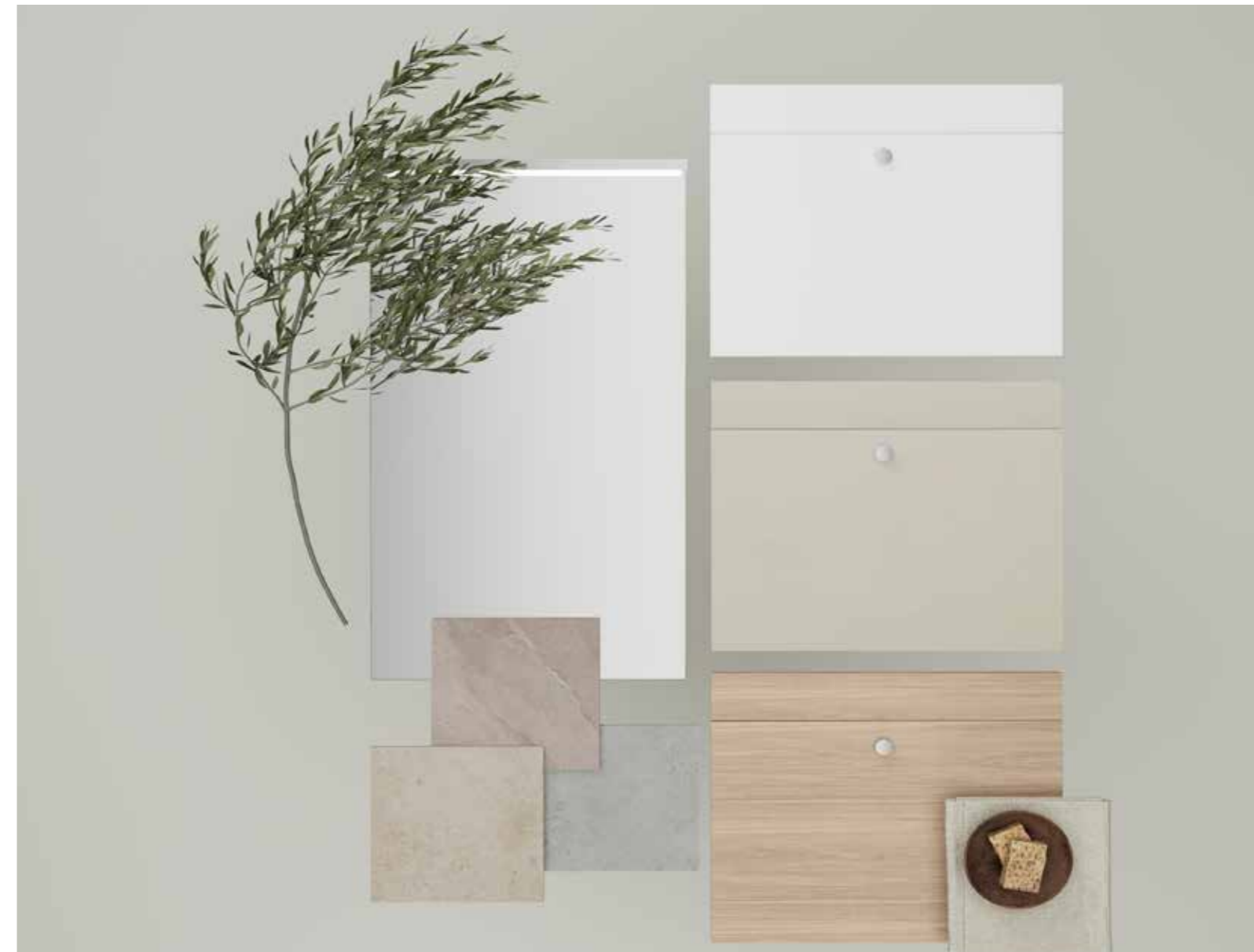
WC Storage Pure Oak

Mirror with lighting and a chest of drawers with one drawer and knob in pure oak expands storage in the WC. Choose if you want brown, beige or grey tile.

Specification

- Chest of drawers with one drawer and knob in pure oak
- Mirror with LED lighting
- Tile 15x15. Base brown-beige, Warm sand-beige or Cool grey.

SEK: Pure Oak 9,900





Bonava Sverige AB
Visiting address
Östra Hamngatan 5
411 10 Göteborg

info@bonava.se
bonava.se

Tel: 08-409 544 00

Org.nr 556726-4121
VAT nr SE 556726412101

Visualisations
Liljewalls arkitekter

Production
Folket Sthlm

Printing house
Taberg Media Group, Stockholm, 2025



Bonava reserves the right to make changes to its range. Images and visualisations may vary. If a product is discontinued, it will be replaced with an equivalent product. Please note that it is not possible to order other interior design elements than those presented in our sales material. The kitchen set-up in your new home will be adapted to your choice of style concept. However, it is not possible to change the kitchen layout according to personal preferences as this affects the electricity, plumbing and construction time. On the kitchen drawing you receive from us, you can see what your kitchen will look like and what is included.

Edition: 001

Follow us at @bonavasverige and @obos.se

OBOS Nya Hem AB
Visiting address
Råsundavägen 4
169 67 Solna

info@obos.se
obos.se

Tel: 010-434 14 00

Org.nr 559269-1983
VAT nr SE 559269198301

