

# Klockaren i Luthagen

32 kvm

















1 rum och kök

Trapphus: 2

Lgh: 2-1305, 2-1405

Upplåtelseform: Bostadsrätt

Våning: 2, 3

-  Diskmaskin
-  Induktionshäll och -ugn
-  Kylskåp och frys
-  Mikrovågsugn
-  Överskåp
-  Duschhörn
-  Kombimaskin
-  Förberett för handdukstork
-  Tillval spegelskåp badrum
-  Tillval väggskåp badrum
-  Garderob
-  Linneskåp
-  Städskåp
-  Kapphylla
-  Elcentral
-  Vattenfördelare (lucka i innertak)
-  Ventilationsaggregat (lucka i innertak)
-  TV Förstärkt vägg för upphängning av TV
-  Undertak
-  Konvektor, höjd 0,4 m

BH Bröstningshöjd 0,0 m om inget annat anges.

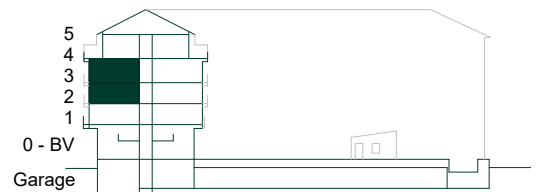
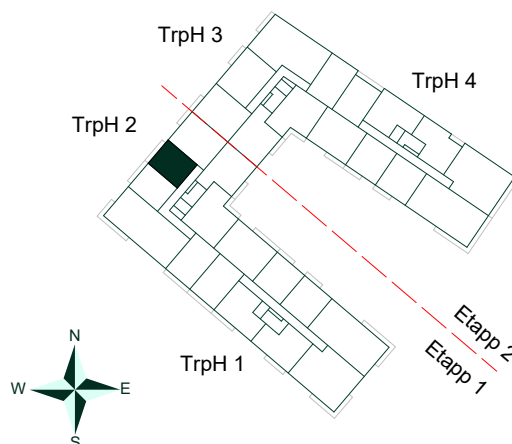
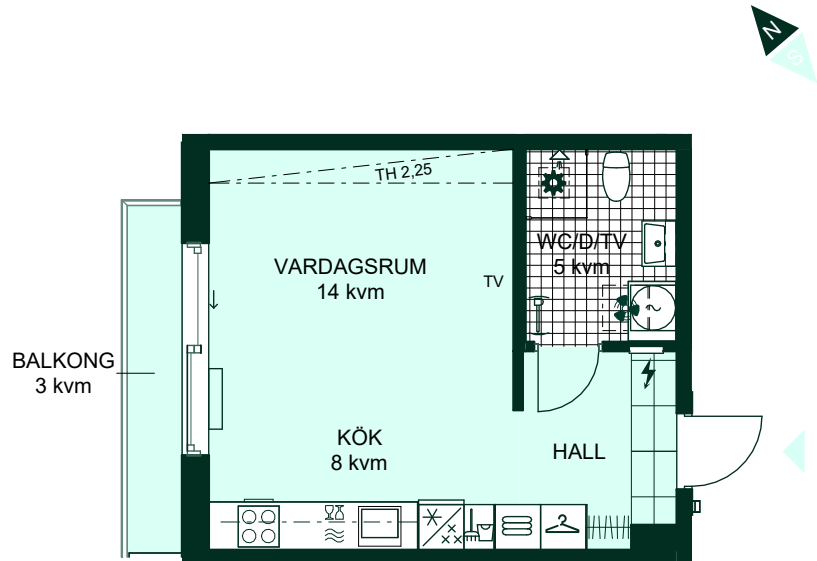
TH Takhöjd 2,5 m om inget annat anges.

Takhöjd 2,2 m i TVÄTT/WC/D.

Kvadratmeter är cirka.

Mått anges i meter.

All inredning monteras enligt planritning.



SKALA 1:100



Reservation för eventuella ändringar och ytavvikelser.  
Datum: 2024-05-28 Revidering datum: 2026-04-10