

# Klockaren i Luthagen

32 kvm + 14 kvm loft
















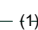








1 rum och kök

Trapphus: 1

Lgh: 1-1006

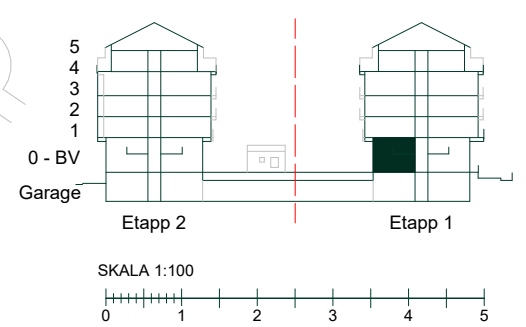
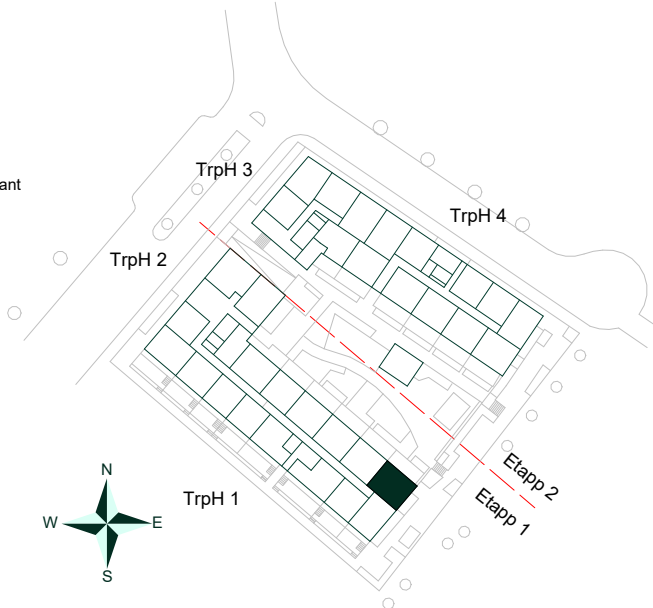
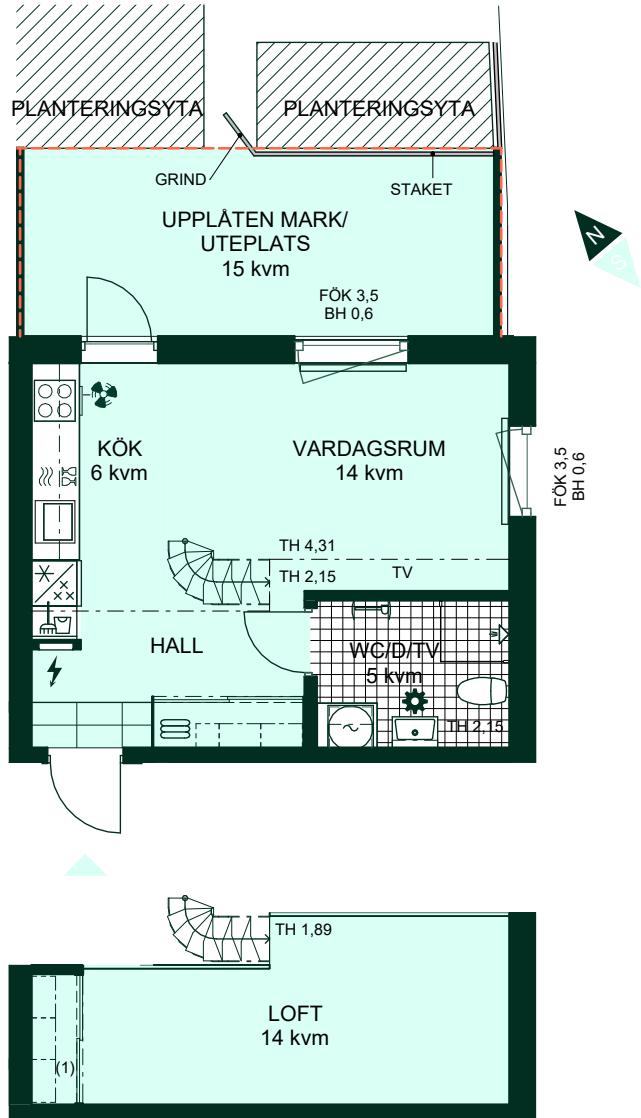
Upplåtelseform: Bostadsrätt

Våning: 0 - Entréplan

-  Diskmaskin
-  Induktionshäll och -ugn
-  Kylskåp och frys
-  Mikrovågsugn
-  Överskåp
-  Duschhorn
-  Kombimaskin
-  Förberett för handduktork
-  Tillval spegelskåp badrum
-  Tillval väggskåp badrum
-  Städskåp
-  Linneskåp
-  Skjuddörrsgarderob
-  Skjuddörrsgarderob, höjd inne i garderoben ca 1,89 m
-  Elcentral
-  Vattenfördelare i kommoden
-  Ventilationsaggregat ovanför köksinredning
-  TV Förstärkt vägg för upphängning av TV
-  Radiator, längd enl plan, höjd 0,5 m
-  Kant loft
-  TH Takhöjd
-  Gräns för upplåten mark
-  BH Bröstningshöjd
-  FÖK Fönster överkant

Uteplatsdörrar har överljus med överkant lika fönster

Kvadratmeter är cirka.  
Mått anges i meter.  
All inredning monteras enligt planritning.



SKALA 1:100  
Reservasjon för eventuella ändringar och ytavvikelser.  
Datum: 2024-05-28 Revidering datum: 2026-04-16