

Glimmer i Tollare

53 kvm





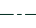










3 rum och kök

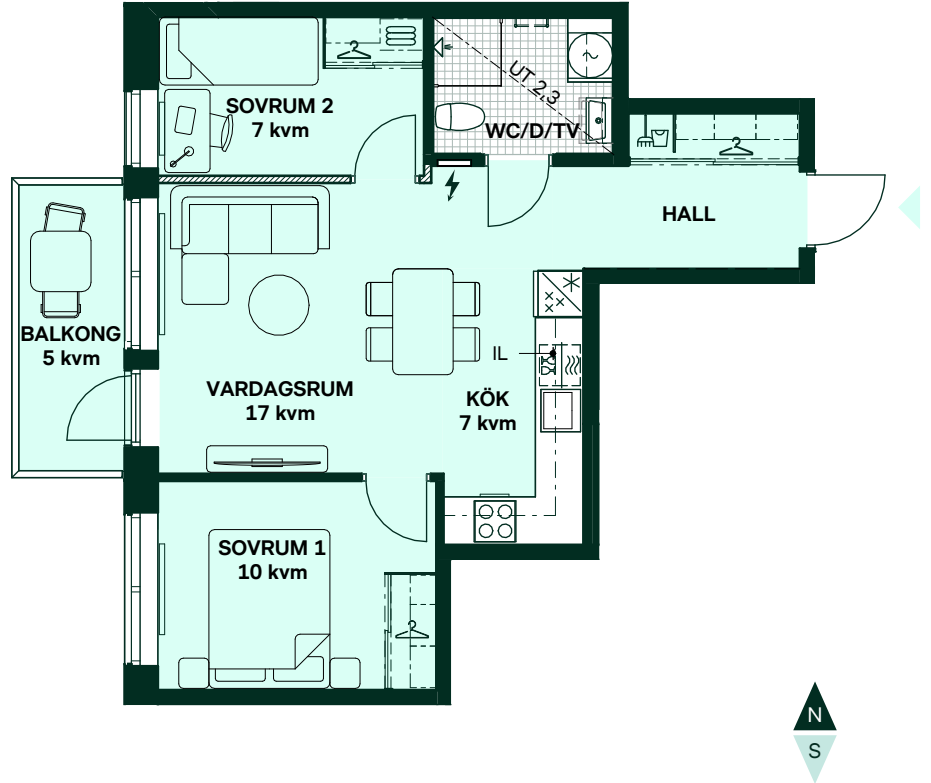
Hus: 1

Lgh: 11203, 11303, 11403, 11503, 11603, 11703, 11803, 11903.

Upplåtelseform: Bostadsrätt

Våning: 2, 3, 4, 5, 6, 7, 8, 9

-  Diskmaskin
-  Induktionshäll och ugn
-  Kylskåp och frys
-  Mikro
-  Överskåp i kök
Överskåp i badrum (tillval)
-  Duschvägg,
raka svängbara skärmar
-  Kombimaskin
-  Handdukstork (tillval)
-  Kommod (tillval storlek)
-  Klädförvaring
-  Linneförvaring
-  Städsåp
-  El- och mediacentral
-  Radiator
-  Frånvalsvägg
- UT** Undertakshöjd
- IL** Inspektionsslucka



Bröstningshöjd 0,7m om inget annat anges.

Takhöjd 2,5m om inget annat anges.

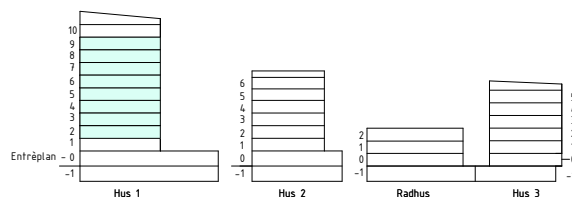
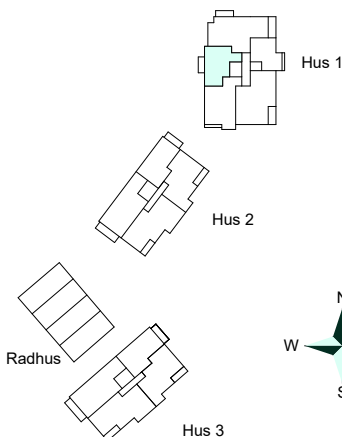
Inspektionsslucka i takanslutning i kök
och i undertak i badrum.

Kvadratmeter är cirka.

Mått anges i meter.

Lokala försänkningar i innertak kan förekomma.

All fast inredning monteras enligt planritning.



SKALA 1:100



Reservation för eventuella ändringar och ytavvikelser.
Datum: 2025-10-03 Revidering datum: 2026-06-04